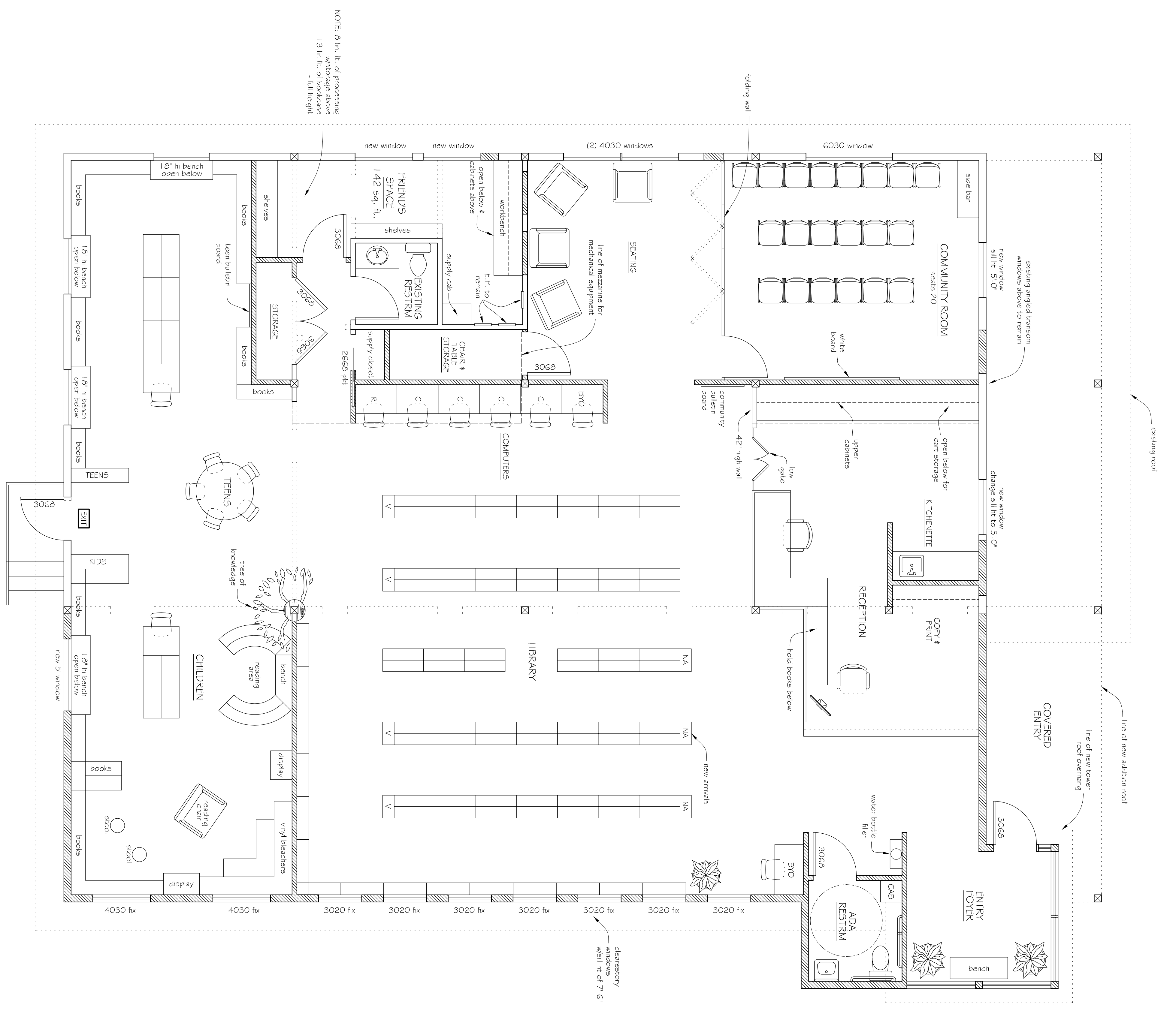
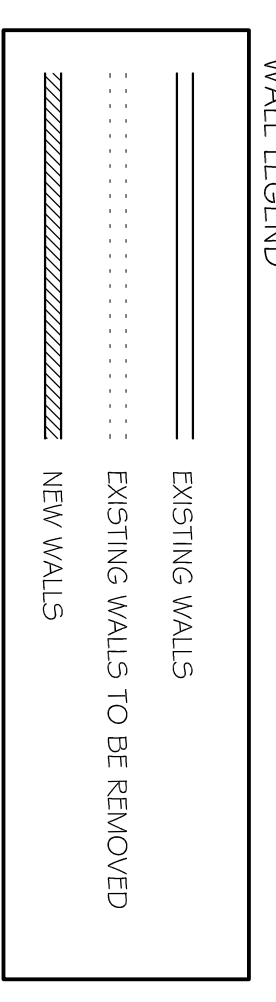


**ALTERNATE SETUP**  
SCALE: 1/4" = 1'-0"



NOTE: 8 in. ft. of processing  
workspaces above  
1.3 in ft. of bookcase  
- full height

ADULT SECTION - 1760 LIN. FT. OF SHELF SPACE - 49% INCREASE  
TEEN SECTION - 229 LIN. FT. OF SHELF SPACE - 44% INCREASE  
CHILDRENS SECTION - 143 LIN. FT. OF SHELF SPACE - 42% INCREASE



**PROPOSED FLOOR PLAN**  
SCALE: 1/4" = 1'-0"

**OPTION 3**

CONTRACTOR TO VERIFY ALL DIMENSIONS PRIOR TO ORDERING & CONSTRUCTION