



# Recycling Modernization Act (RMA) and Local Government Needs Assessment

# Agenda

---

- Plastic Pollution & Recycling Modernization Act (RMA)
  - Overview of how we got here
  - How it will work
  
- RMA: Needs Assessment
  - Completing the survey
  - Eligible funding



# Modernizing Oregon's Recycling System

---

**2017-2018**  
National Sword:  
International  
recycling market  
disruptions

**2018-2020**  
Recycling  
Steering  
Committee

**Late 2020**  
DEQ Legislative  
Concept and  
negotiations

**2021  
Legislative  
Session**  
SB 582 passed in  
June  
SB 582 =Recycling  
Modernization Act

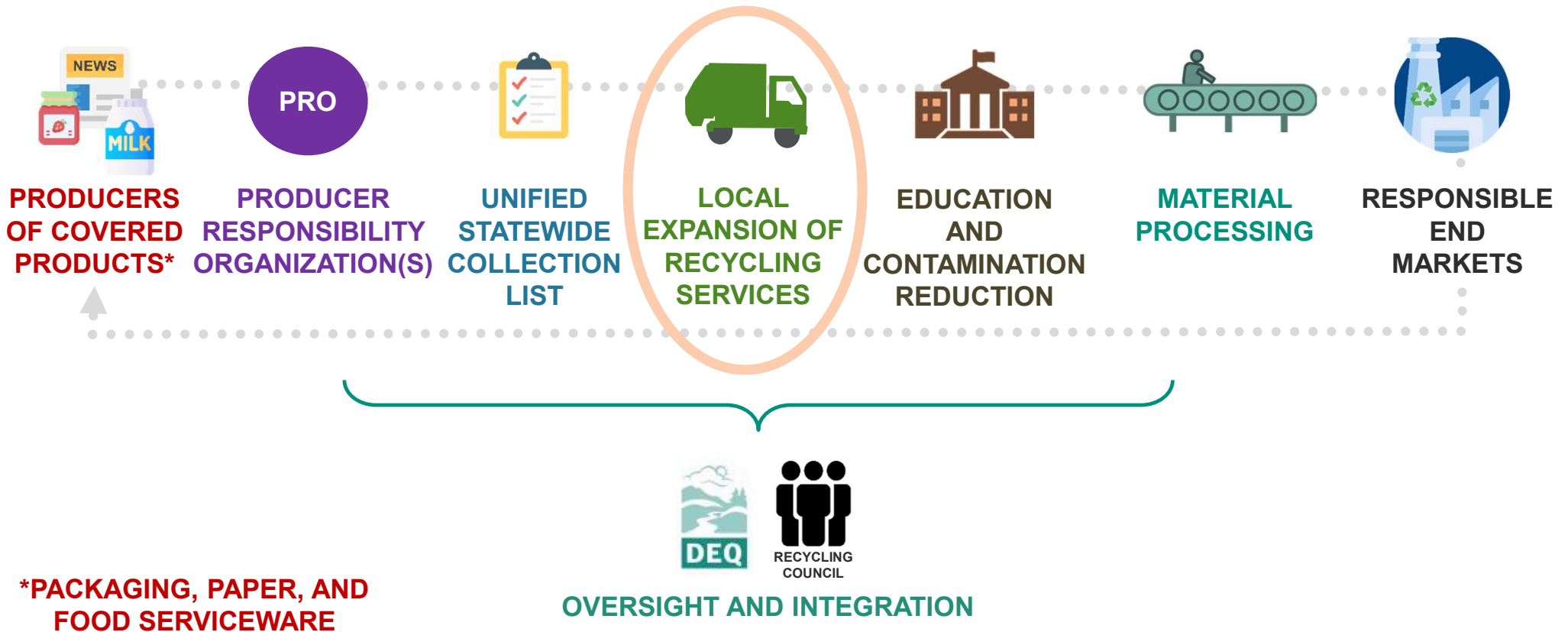
# Plastic Pollution and Recycling Modernization Act (RMA)

---

- Extended Producer Responsibility(EPR) system
- Producers of materials will now share in the responsibility to manage materials.



# How It Will Work



**\*PACKAGING, PAPER, AND FOOD SERVICEWARE**

# RMA: Needs Assessment

---

- Required by law (ORS 459A.890(8))
- Completing the survey is **voluntary**
- Goal of the survey is to gauge interest in expanding recycling collection
- **Will be conducted periodically every few years**

# Needs Assessment Survey

---

- Local Governments and service providers\* should have received a link to the survey on **Jan. 5**
  - Link is to an online survey (SurveyMonkey)
  - Email included an attachment with the survey instructions & questions
- The survey can be submitted at any point before **April 14**
- You can **resubmit** if your answers change
- Local Governments are **strongly encouraged** to work with their service provider(s) to complete the survey.

\*

# Survey Question #5

---

Is your jurisdiction interested in adding or expanding recycling services in 2025-2027?

Yes

No

If no, please explain your decision.

Unsure



# Survey Questions

If you selected “Yes” to Question #5, which service expansion is your jurisdiction requesting? (Select all that apply):

## Potential services include:

- New or expanded on-route recycling collection
- New or expanded recycling depots
- New (if needed) or expanded recycling reload facility



# Examples of Eligible Expenses

---

## **New on-route recycling collection**

- Example: startup expenses such as new trucks or containers.
- Ongoing operational costs will not be covered/reimbursable by the PRO

- **Adding single-family route(s)**
- **Adding multifamily route(s)**
- **Adding commercial route(s)**

# Examples of Eligible Expenses

---

## Expanding on-route recycling collection to accommodate new materials

- Examples: expanding service to add new customers, increasing service collection, using more or larger containers in order to collect the uniform statewide collection list of materials
- Ongoing operational costs, including staffing, will not be covered/reimbursable by the PRO.

- Collection truck(s)**
- Collection containers, roll carts or both**
- On-board contamination monitoring equipment and software** (for upgrading collection programs that do not already have equipment in place)
- Staff safety equipment** (e.g., goggles, safety vests, work boots, etc.)
- Other (please describe)**

# Examples of Eligible Expenses

## New or expanding a recycling depots

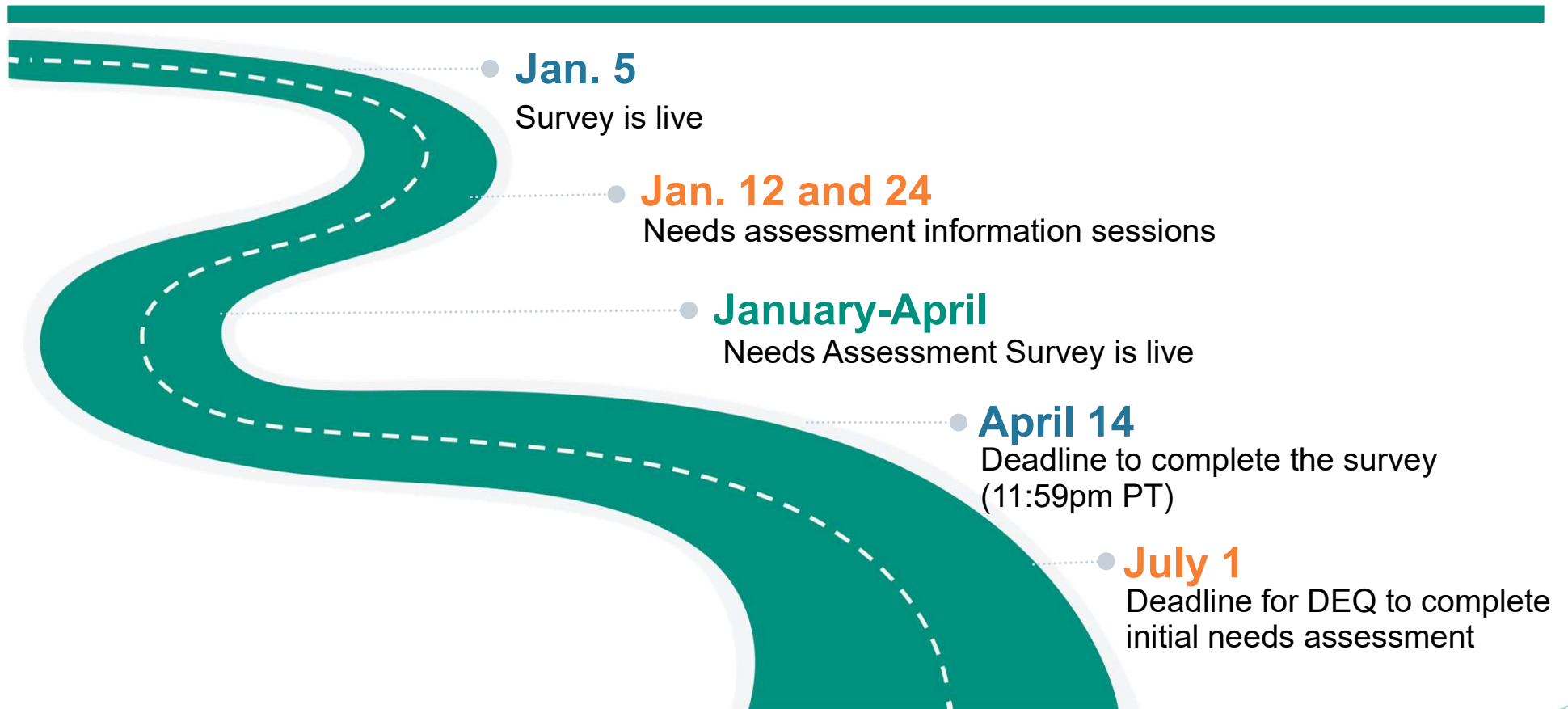
- Collection containers**
- Signage**
- On-site monitoring equipment** (e.g., cameras to monitor for contamination or illegal dumping)
- Equipment to move and load recyclables for shipment**
- Equipment to compact and bale recyclables for shipment**
- Hiring and training staff**
- Staff safety equipment** (e.g., goggles, safety vests, work boots)
- Ongoing operational costs, including staffing**
- Land**
- Storage**
- Other** (e.g., paving, fencing, other improvements). **Please describe.**

# Examples of Eligible Expenses

**Reload Facility** A reload facility is a facility other than a recycling depot\* where recyclable materials are received, consolidated, and reloaded into larger containers or vehicles for transportation to a commingled recycling processing facility or responsible end market

- Equipment to move and load recyclables for shipment**
- Equipment to compact and bale recyclables for shipment**
- Hiring of new staff, if needed, or expansion of staff hours**
- On-site monitoring equipment** (e.g., cameras to monitor for contamination or illegal dumping)
- Staff safety equipment** (e.g., goggles, safety vests, work boots)
- Ongoing operational costs, including staffing**
- Land**
- Storage**
- Other** (e.g., paving, fencing, other improvements). **Please describe.**

# 2023 Needs Assessment Timeline



# After the Needs Assessment

---

DEQ provides information to the PRO

PRO develops a program plan

PRO works with local governments & service providers to determine implementation of expansion services

DEQ reviews & approves the plan

# Thank you!

---

**For general inquiries:**

**[RethinkRecycling@deq.Oregon.gov](mailto:RethinkRecycling@deq.Oregon.gov)**

**For a link to the electronic survey and/or to be added to the distribution list:**

**[julia.marsh@eunomia-inc.com](mailto:julia.marsh@eunomia-inc.com)**

**Cat Rhoades, DEQ Regional Specialist**

**[Cathie.rhoades@deq.Oregon.gov](mailto:Cathie.rhoades@deq.Oregon.gov)**